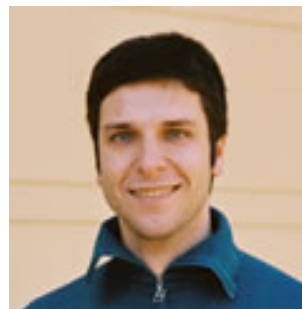


CURRICULUM VITAE

Jan libich

Senior Lecturer
School of Economics and Finance
La Trobe University
Melbourne, 3086, Australia



Phone: +61 3 94792754, **Fax:** +61 3 94791654

Email: j.libich@latrobe.edu.au

Web (homepage): www.janlibich.com

EDUCATION

- ◆ **PhD** March 2002 - Dec 2005
School of Economics, University of New South Wales, Sydney
Thesis: Optimal Institutional Design of Monetary Policy
Supervisor: A/Prof Glenn Otto
- ◆ **MCom(hons)** Feb 1997 - June 1999
University of Economics (VŠE), Prague, Czech Republic
Major: Finance, Thesis: Inflation Targeting
- ◆ **BCom** Sep 1993 - Feb 1997
University of Economics (VSE), Prague, Czech Republic
Major: Taxation and Financial Control

RESEARCH INTERESTS

- ◆ Monetary Theory and Policy ◆ Fiscal Theory and Policy ◆ Game Theory
- ◆ Institutional Economics ◆ Political Economy ◆ Time Scales Calculus

EMPLOYMENT HISTORY (academic)

- ◆ **Senior Lecturer** from Nov 2008
School of Economics and Finance, La Trobe University, Melbourne
- ◆ **Lecturer** July 2005 - Nov 2008
School of Economics and Finance, La Trobe University, Melbourne
- ◆ **Research Associate** from Oct 2005
Centre for Applied Macroeconomic Analysis, Australian National University
Macroeconomic Policy Frameworks section
- ◆ **Education Development Unit** 2004 - 2005
Faculty of Economics and Finance, UNSW
Co-designing and teaching transition programs for new students and tutors
- ◆ **Tutor-in-Charge, Tutor** 2002 - 2004
School of Economics, UNSW
Business Economics (PG), Macroeconomics 1 (UG), Macroeconomics 2 (UG)

TEACHING

- ◆ **Central Banks and Monetary Policy** (third year, enrolment 50) from 2006
- ◆ **Macroeconomics** (first year, enrolment 450) from 2006

- ◆ **Macroeconomic Theory** (second year, enrolment 300) from 2009
- ◆ **Managerial Economics** (second year, enrolment 140) 2005 - 2006

OTHER RESPONSIBILITIES

- ◆ **Co-convener:** 12th Australasian Macroeconomics Workshop, La Trobe Apr 2007
- ◆ **Co-organizer:** CEPET workshop in Economic Theory, Udine, Italy Jun 2007
- ◆ **Coordinator:** Departmental Workshop from Jan 2007
- ◆ **Member:** Human Ethics Committee 2005 - 2007

VISITING POSITIONS

- ◆ University of Graz June 2008
- ◆ George Mason University, School of Public Policy, Washington DC Jan & Sept 2008
- ◆ University of West Bohemia, Pilsen Jan 2008, July 08 - Jan 09, Nov 09
- ◆ University of New South Wales, Sydney Oct/Nov 2007
- ◆ CAMA, Sydney Aug 2007
- ◆ Czech National Bank, Prague July 2006

RESEARCH PAPERS (PUBLISHED AND FORTHCOMING)

- 1) Libich, J. and Stehlík, P. (2010), 'Incorporating Rigidity and Commitment in the Timing Structure of Macroeconomic Games', *Economic Modelling*, Elsevier, 27, 767–781
- 2) Libich, J. (2009), 'A Note on the Anchoring Effect of Explicit Inflation Targets', *Macroeconomic Dynamics*, Cambridge University Press, Volume 13(5), 685–697
- 3) Hughes Hallett, A., Libich, J., and Stehlík P. (2009), 'Rogoff Revisited: The Conservative Central Banker Proposition Under Active Fiscal Policies', *Economics Letters*, Elsevier, Volume 104(3), pp140-143
- 4) Libich, J. (2008), 'An Explicit Inflation Target as a Commitment Device', *Journal of Macroeconomics*, Elsevier, Volume 30(1), pp43-68
- 5) Libich, J. and Stehlík, P. (2008), 'Macroeconomic Games on Time Scales', *Dynamic Systems and Applications*, Volume 5, pp274-278
- 6) Hughes Hallett, A. and Libich, J. (2007), 'Fiscal-Monetary Interactions: The Effect of Fiscal Restraint and Public Monitoring on Central Bank Credibility', *Open Economies Review*, Springer, Volume 18(5), pp559-576
- 7) Libich, J. (2006), 'Should Monetary Policy Be Transparent?', *Policy* 22:1, Autumn, pp28-34

RESEARCH PAPERS (SUBMITTED)

- 8) Lenten, L., Libich, J., and Stehlík, P. (2010), 'Penalties Before or After Extra-time? An Empirical Assessment of Footballers' Incentives'
- 9) Basov, S., Libich, J. and Stehlík, P. (2010), 'Stochastic Timing, Uniqueness, and Efficiency in Games'
- 10) Libich, J. and Stehlík P. (2010), 'Endogenous Monetary Commitment', CAMA WP 1/2009
- 11) Hughes Hallett, A., Libich, J., and Stehlík P. (2010), 'Macprudential Policies and Financial Stability' (previously circulated as Financial Instability Prevention', CAMA WP 14/2009)
- 12) Libich, J. (2010), 'Inflation Nutters? Modelling the Flexibility of Inflation Targeting' (a revised version of 'Inflexibility of Inflation Targeting Revisited: Modelling the Anchoring Effect', CAMA WP 2/2006)
- 13) Libich, J. and Stehlík, P. (2010), 'Monetary Policy Facing Fiscal Indiscipline Under Generalized Timing of Actions' (previously circulated as Fiscal Rigidity in a Monetary Union: The Calvo Timing and Beyond', CAMA WP 22/2008)
- 14) Hughes Hallett, A., Libich, J., and Stehlík P. (2010), 'Welfare Improving Coordination of Fiscal and Monetary Policy', CAMA WP 4/2008

- 15) Libich, J., Hughes Hallett, A., and Stehlik P. (2010), 'Monetary and Fiscal Policy Interaction With Various Degrees of Commitment', CEPR DP 6586 and CAMA WP 21/2007
- 16) Hughes Hallett, A. and Libich, J. (2010), 'Explicit Inflation Targets, Communication, and Central Bank Independence: Friends or Foes?' (a significantly revised version of 'Central Bank Independence, Accountability, and Transparency: Complements or Strategic Substitutes?', CEPR DP 5470)

RESEARCH PAPERS (IN PROGRESS)

- 17) Franta, M., Libich, J. and Stehlik, P. (2010), 'Can Monetary Commitment Discipline Fiscal Policy? Evidence from an Estimated DSGE Model'
- 18) Harding, D. and Libich, J. (2010) 'Froth and Bubble: The State of Paul Krugman's Macroeconomic Analysis'
- 19) Libich, J. and Savage, J. (2010), 'Tethering the Fiscal Sow: Monetary Policy that Keeps Pork in the Sty'
- 20) Libich, J. and Savage, J. (2010), 'Fiscal Neglect in a Monetary Union'
- 21) Libich, J. (2010), 'Rational Inattention and Endogenously Sticky Expectations'

PRESENTATIONS AT CONFERENCES AND WORKSHOPS

◆ Recent Developments in Macroeconomics Mannheim, Germany	Jun 2010
◆ Causes and Consequences of the 2008 International Crisis Rome, Italy	Jun 2010
◆ The Economics and Psychology of Football London, UK	May 2010
◆ 15th Australasian Macroeconomics Workshop RBNZ, VUW, New Zealand	Apr 2010
◆ 22nd Australasian Finance and Banking Conference UNSW, Sydney	Dec 2009
◆ Financial Crisis: Institutions and Policies Mendel University, Czech Republic	Nov 2009
◆ 38th Australian Conference of Economists University of Adelaide	Sep 2009
◆ Workshop on Economic Dynamics Deakin University	Aug 2009
◆ Sydney-Melbourne Conference on Macro Theory University of Sydney and Melbourne	May 2009
◆ 14th Australasian Macroeconomics Workshop Deakin University	Apr 2009
◆ 27th Australasian Economic Theory Workshop Massey University, Auckland	Feb 2009
◆ 5th Biennial Conference of the Czech Economic Society University of Economics, Prague	Nov 2008
◆ 13th Australasian Macroeconomics Workshop University of Sydney	Mar 2008
◆ American Economic Association Meeting New Orleans, USA	Jan 2008
◆ 35th Australian Conference of Economists Hobart, University of Tasmania	Sep 2007
◆ Fiscal Policy Frameworks: Roles, Evolution and Modelling CAMA, Sydney	Aug 2007
◆ Central European Workshop in Economic Theory CEPET, Udine, Italy	Jun 2007
◆ 12th Australasian Macroeconomics Workshop La Trobe, Melbourne	Apr 2007
◆ 25th Australasian Economic Theory Workshop ANU, Canberra	Feb 2007
◆ 35th Australian Conference of Economists Curtin University, Perth	Sept 2006

◆ 11th Australasian Macroeconomics Workshop The Reserve Bank of Australia and CAER, UNSW, Sydney	April 2006
◆ 24th Australasian Economic Theory Workshop Centre of Applied Economic Research, UNSW, Sydney	Feb 2006
◆ Advanced Liberty & Society Conference Centre for Independent Studies, Sydney	Sep 2005
◆ 34th Australian Conference of Economists University of Melbourne, Economic Society of Australia	Sep 2005
◆ 1st Summer School on Monetary Theory and Policy ZEI, Bonn, Germany (lecturers: Ben McCallum, Larry Christiano)	July 2005
◆ 10th Australasian Macroeconomics Workshop University of Melbourne	Mar 2005
◆ 23rd Australasian Economic Theory Workshop University of Auckland, New Zealand	Feb 2005
◆ PhD Conference in Economics and Business (UNSW Nominee) Australian National University, Canberra	Nov 2004
◆ 33rd Australian Conference of Economists University of Sydney, Economic Society of Australia	Sep 2004
◆ 1st Meeting of the Study Group on Monetary Policy in CIS Countries Kiel Inst. for World Economics and UACES, Bruges, Belgium	July 2004

INVITED SEMINAR PRESENTATIONS

◆ European Central Bank (Jun 2010) ◆ Charles University (Nov 2009) ◆ Czech National Bank (Jan 2009) ◆ London School of Economics (Sept 2008) ◆ International Monetary Fund (Sept 2008) ◆ Cerge-EI (Sept 2008) ◆ George Mason University (Sep 2008) ◆ Austrian National Bank (June 2008) ◆ University of Graz (June 2008) ◆ UNSW (Oct 2007) ◆ University of Adelaide (March 2007) ◆ Deakin (August 2006) ◆ Dutch National Bank (July 2006) ◆ Czech National Bank (July 2006) ◆ Koblenz Business School (July 2006) ◆ Munich University (June 2006) ◆ Deutsche Bundesbank (June 2006) ◆ Dortmund (June 2006) ◆ Reserve Bank of New Zealand (Nov 2005) ◆ Victoria University of Wellington (Nov 2005) ◆ University of Queensland (Sept 2005) ◆ Bayreuth University, Germany (June 2005) ◆ Reserve Bank of Australia (Feb 2005)

REFEREEING

◆ European Economic Review ◆ International Review of Economics and Finance ◆ Journal of Economic Surveys ◆ Australian Economic Review ◆ Emerging Markets Finance and Trade ◆ Journal of Macroeconomics ◆ Journal of Economic Surveys ◆ Open Economies Review ◆ Oxford Economics Papers ◆ Economic Record ◆ Economics Papers ◆ Scottish Journal of Political Economy ◆ International Journal of Central Banking ◆ Economic Modelling ◆ Sustainability Accounting, Management and Policy Journal ◆ Policy ◆ CERGE-EI (PhD thesis)

GRANTS AND AWARDS

◆ Winner, Lecturer of the Year (for La Trobe University) Organized by UniJobs and based on nominations from students at Australian Universities	2009
◆ Australian Research Council Discovery Grant Monetary-fiscal policy interactions and their effect on economic performance: new theory, empirics, and an application to Australia (\$134,000, Partner investigators: Andrew Hughes Hallett, Petr Stehlik)	2008-2010
◆ Faculty of Law and Management Large Research Grant Developing a toolkit of indicators and macroeconomic models (\$70,000, with Don Harding, Shawn Leu, Heidi Ryoo, and Buly Cardak)	2009-2010
◆ Faculty of Law and Management Competitive Research Grants Four grants of \$5,000 each	2006 - 2007
◆ Winner, Dean's Award for Service 'For substantial and significant voluntary contribution to the development of the Faculty of Commerce and Economics', UNSW	May 2005
◆ International Postgraduate Research Scholarship (IPRS)	2002 - 2005

Commonwealth Government of Australia	
◆ University Postgraduate Research Scholarship (UPRS)	2002 - 2005
University of New South Wales	
◆ Monthly Stipends for Outstanding Academic Results	1994 - 1995
University of Economics, Prague	

MEMBERSHIP

◆ **Economic Design Network** ◆ **Economic Society of Australia** ◆ **American Economic Association**

REFERENCES

◆ **Prof Harry Clarke**

School of Economics and Finance, La Trobe University, Bundoora, Melbourne, 3086, Australia

Phone: +61 3 9479 1732, Fax: +61 3 94791654, Email: h.clarke@latrobe.edu.au

◆ **Prof Andrew Hughes Hallett**

School of Public Policy, MS 3C6, George Mason University Fairfax, VA 22030, USA

Phone: +1 703-993-9123, Fax: +1 703-993-2284, Email: ahughesh@gmu.edu

◆ **A/Prof Glenn Otto**

Australian School of Business, UNSW, Sydney, NSW 2052, Australia

Phone: +61 2 9385 3332, Fax: +61 2 9313 6337, Email: g.otto@unsw.edu.au

◆ **Prof Robert Hill**

Department of Economics, University of Graz, 8010, Austria

Phone: + 43 316 3803442, Fax: +43 316 3809520, Email: robert.hill@uni-graz.at

◆ **Prof Viv Hall**

School of Economics and Finance, Victoria University of Wellington, New Zealand

Phone: +64 4/(04) 463 5081, Fax: +64 4/(04) 463 5014, Email: viv.hall@vuw.ac.nz